

65 PLEASANT AVENUE • WINDJAMMER MODEL B • \$549,500



Artist's Concept

## WINDJAMMER MODEL WITH COVERED TERRACE

*1400 square feet • Optional Finished Basement Upgrade*

*65 Pleasant Avenue • Lot 1 Size: 53'4" x 113'*

Ken Burden & Carolyn Thomson, Sales Associates

[www.blythwoodhomes.ca](http://www.blythwoodhomes.ca) • 1-866-422-6610 • [kenandcarolyn@blythwoodhomes.ca](mailto:kenandcarolyn@blythwoodhomes.ca)

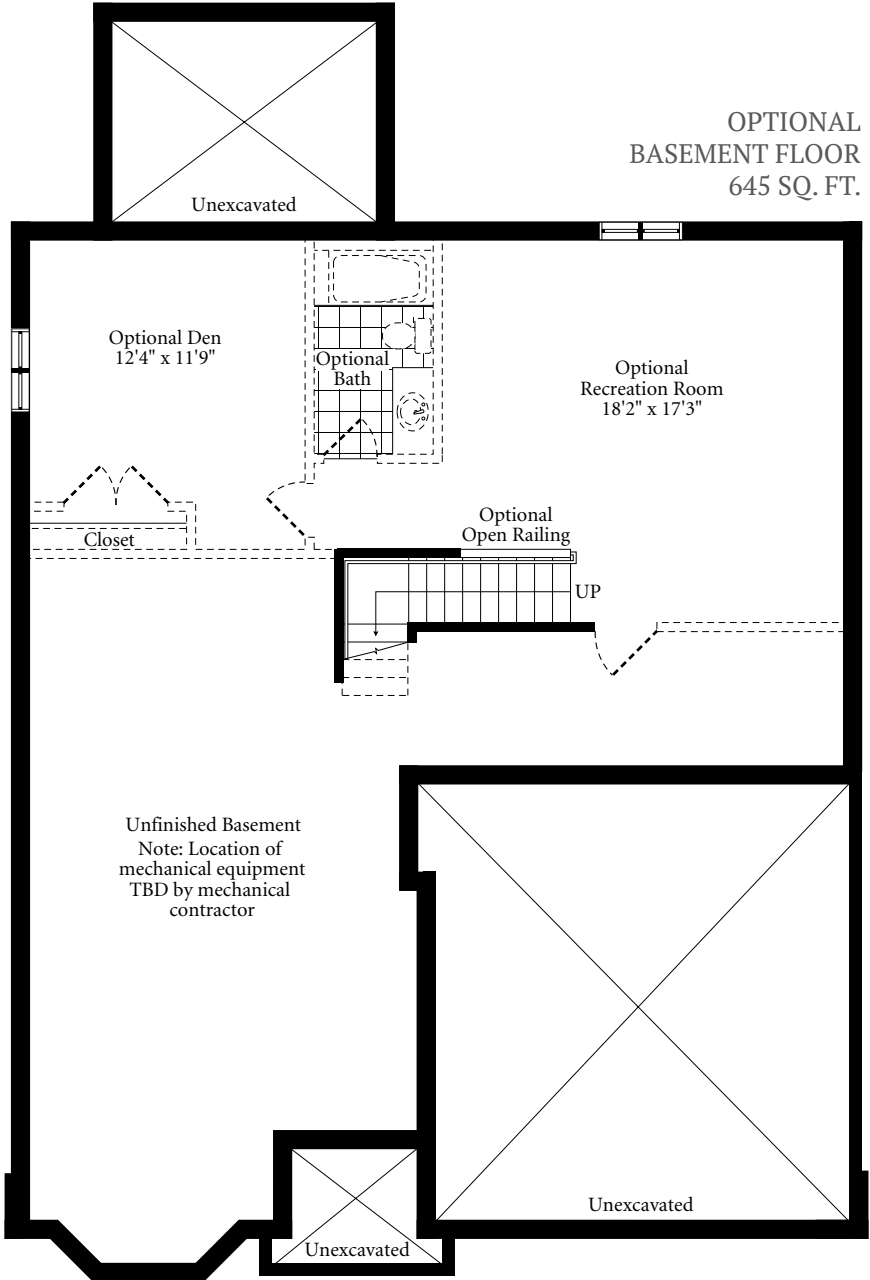
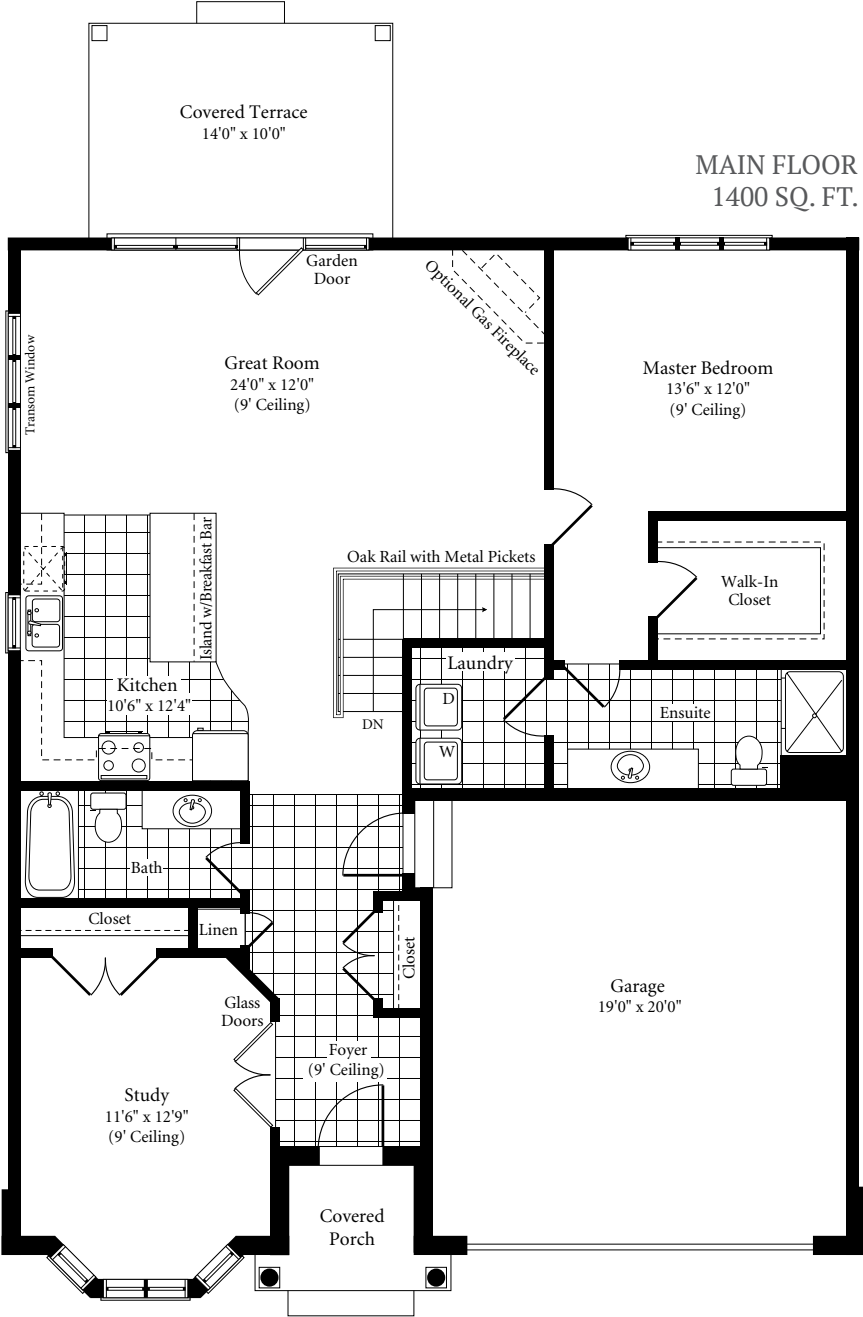
All dimensions are approximate and generally comprise the greater width by the greater length. Actual usable floor area may vary from that stated, which includes open areas and areas finished below grade where applicable. Elevation renderings are Artists' concepts and may vary according to floor plan configurations. Prices subject to change without notice. See Sales Representative for details. E & OE.



**Blythwood**  
HOMES

OUR PASSION IS BEAUTIFUL HOMES

*Refer to Pleasant Avenue Lots Features and Finishes List*



All dimensions are approximate and generally comprise the greater width by the greater length. Actual usable floor area may vary from that stated, which includes open areas and areas finished below grade where applicable. Elevation renderings are Artists' concepts and may vary according to floor plan configurations. Prices subject to change without notice. See Sales Representative for details. E & OE.