

3464 NORTH SHORE DRIVE • SOLD

SOLD



Artist's Concept

NORTH SHORE DRIVE CUSTOM HOME

1839 square feet plus 980 sq. ft. finished Basement

3464 North Shore Drive • Lot Size: 66' x 135'

Ken Burden & Carolyn Thomson, Sales Associates

www.blythwoodhomes.ca • 1-866-422-6610 • kenandcarolyn@blythwoodhomes.ca

All dimensions are approximate and generally comprise the greater width by the greater length. Actual usable floor area may vary from that stated, which includes open areas and areas finished below grade where applicable. Elevation renderings are Artists' concepts and may vary according to floor plan configurations. Prices subject to change without notice. See Sales Representative for details. E & OE.

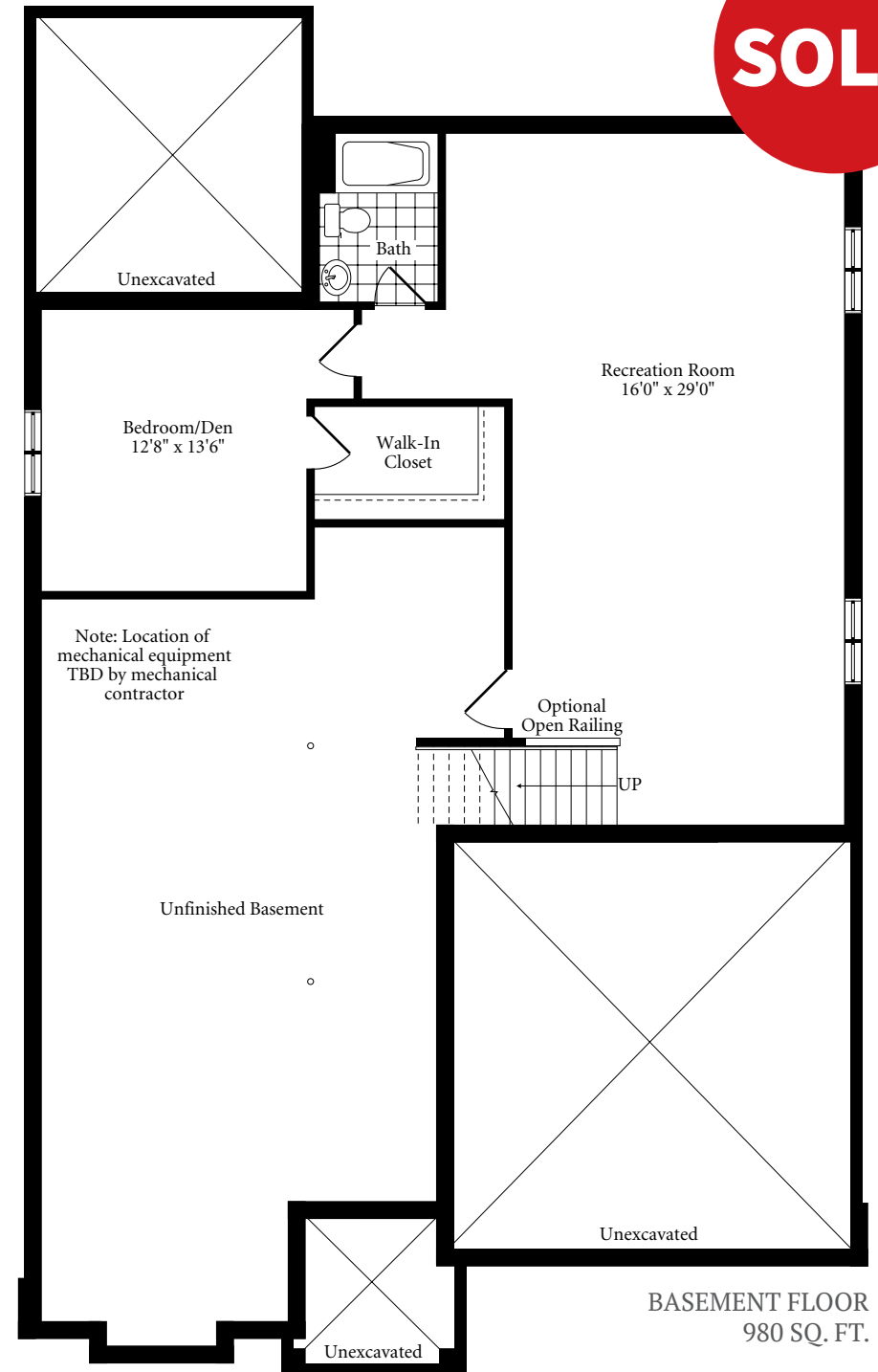
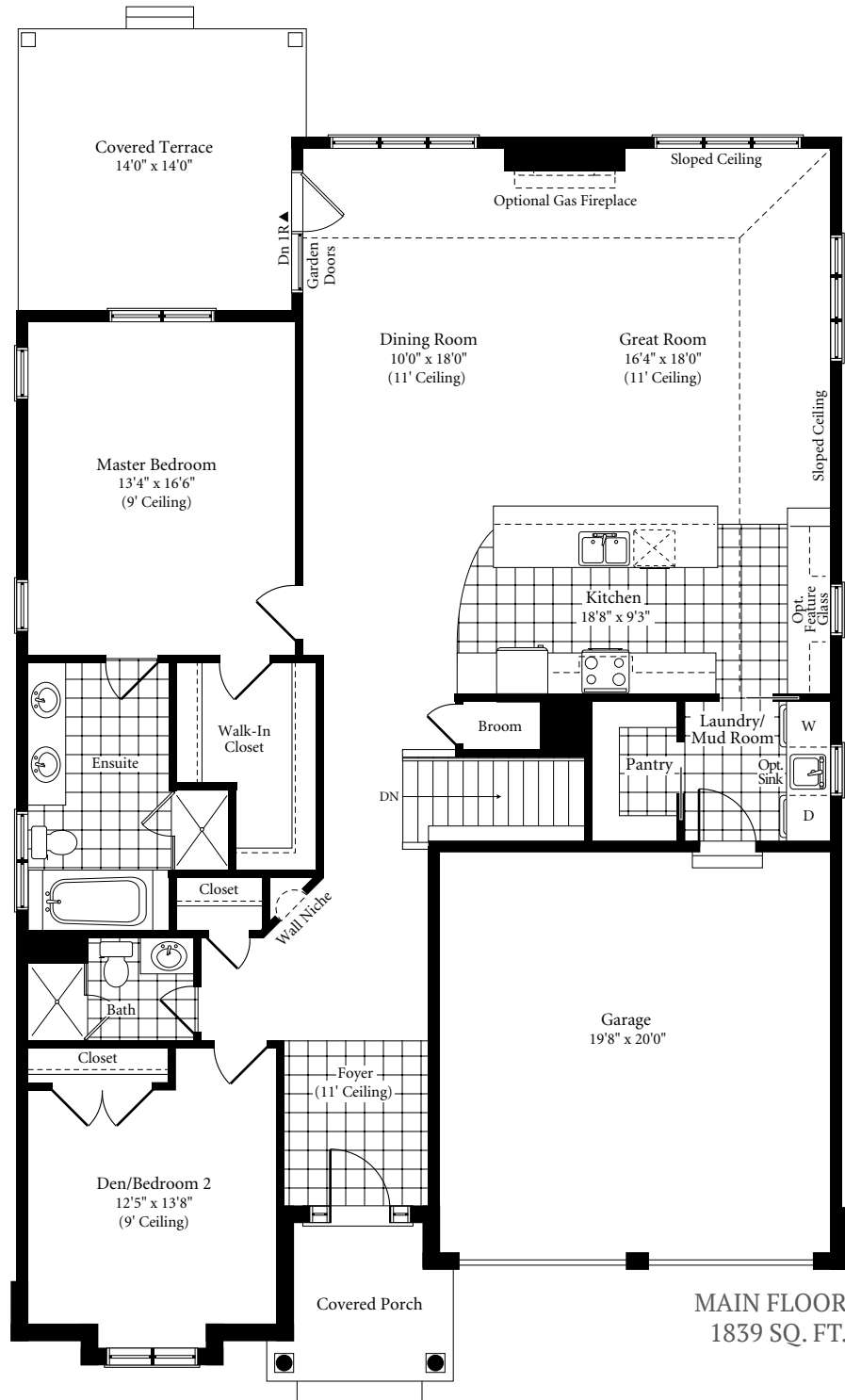


Blythwood
HOMES

OUR PASSION IS BEAUTIFUL HOMES

Home includes upgraded cabinets, quartz countertops, tempered glass ceramic shower stall, upscale bathroom fixtures, 10 pot lights, hardwood flooring in the Great Room, Living Room and front Bedroom/Den and a gas fireplace with shaker mantle

SOLD



All dimensions are approximate and generally comprise the greater width by the greater length. Actual usable floor area may vary from that stated, which includes open areas and areas finished below grade where applicable. Elevation renderings are Artists' concepts and may vary according to floor plan configurations. Prices subject to change without notice. See Sales Representative for details. E & OE.