

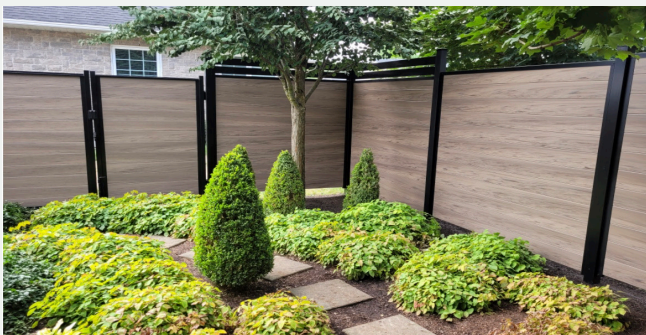
# New Landscaping Options FOR PHASE 2 TOWNS



At Blythwood Homes we are always listening to comments and insights from our home buyers. We are also thankful for our sales team Ken Burden and Deb Morton for their insights gained from their conversations with our home buyers.

## FENCING

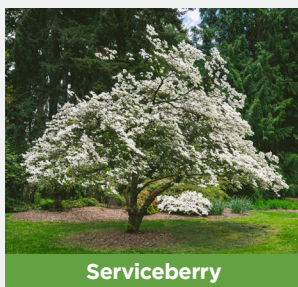
The revised approach includes a 7' high fence along the rear boundary of each townhome for added privacy. The fencing selected is the New Trend Vinyl fencing is the stunning Green Teak colour. This type of fencing is very attractive and low maintenance. Note the photo below shows the look of the fence but the locations in Phase 2 will be different.



## PLANTING BED

### with Serviceberry and Red Osier Dogwoods

The planting beds will be changed from a low shrub bed to a circular bed with a Smooth Bark Serviceberry tree and 2 Red leaf Dogwood. The Serviceberry will grow between 15 and 25 feet in height which will create an attractive green privacy screen. The red leaf dog woods will have their will grow to between 6' to 12' in height and can be pruned as required. Their distinctive red stems and branches will add colour all winter. This bed is aligned with the covered terrace to enhance privacy.



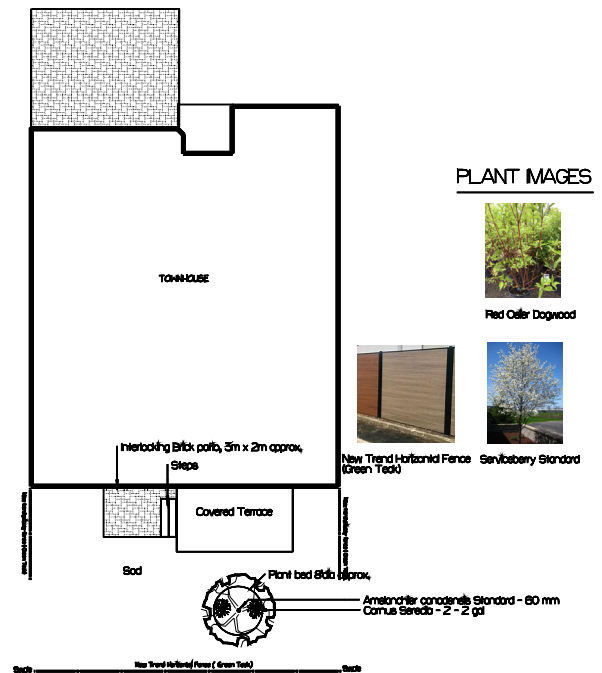
Serviceberry



Red Osier Dogwood

- Both the front and rear yards will be irrigated and all the plantings and street trees in the front yards will be the similar to those in the Phase 1 towns.
- Driveways will be in Windemere Flagstone Paving Stones.
- Buyers of townhomes in Phase 2 will also be able to personalize their rear yard landscaping by adding plantings and paving stone patio area. This will be approved so long as room is left for the lawn care access.
- If buyers add plantings or paving areas, they will be responsible to maintain these areas. They can ask for maintenance through the landscape maintenance company.

## TYPICAL PLAN



## UPGRADED PLAN

Sample upgrade plan with added plantings and paver stone patio at grade \$3,530.



To learn more, contact Deb at  
905-894-5252 or [oakssales@blythwoodhomes.ca](mailto:oakssales@blythwoodhomes.ca)