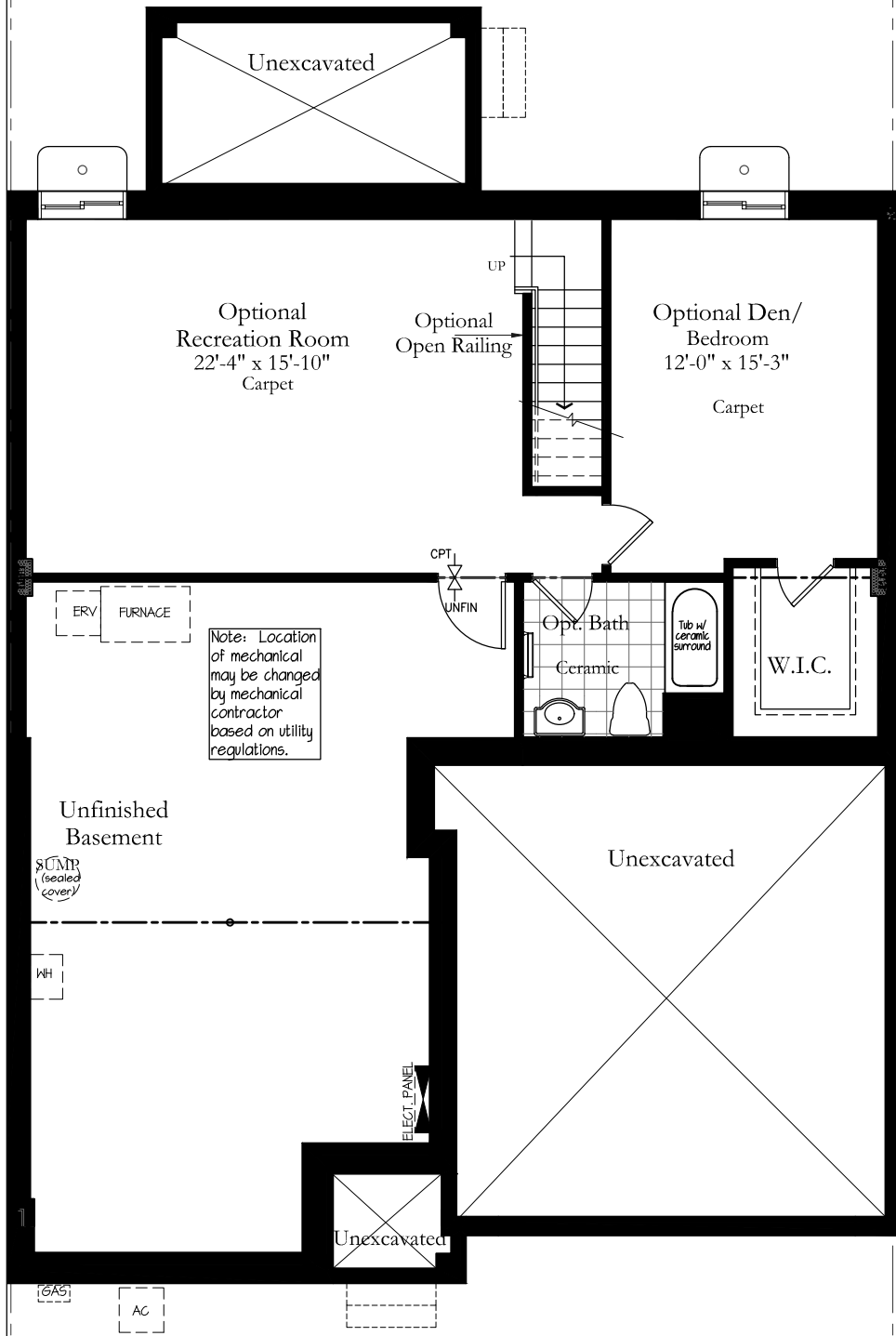


Maple Interior  
 Main Floor Plan  
 1435 Square Feet  
 scale: 1/8"=1'-0"





Note: Location of mechanical may be changed by mechanical contractor based on utility regulations.

**Maple Interior**  
 Basement Floor Plan  
 770 Square Feet Upgrade  
 scale: 1/8"=1'-0"





**EXTERIOR FINISHES LEGEND**

	FIBREGLOSS SHINGLES
	HARDIE SHAKE SIDING
	STONE
	HARDIE BOARD SIDING-BOARD & BATTEN
	HARDIE BOARD SIDING-HORIZONTAL
	CONCRETE
	FOUNDATION WALL
	STUCCO
	STUCCO TRIM
	HARDIE BOARD SIDING-PANEL

Maple Interior  
 Front Elevation  
 scale: 1/8"=1'-0"





EXTERIOR FINISHES LEGEND	
	FIBREGLOSS SHINGLES
	HARDIE SHAKE SIDING
	STONE
	HARDIE BOARD SIDING-BOARD & BATTEN
	HARDIE BOARD SIDING-HORIZONTAL
	CONCRETE
	FOUNDATION WALL
	STUCCO
	STUCCO TRIM
	HARDIE BOARD SIDING-PANEL

Maple Interior  
 Rear Elevation  
 scale: 1/8" = 1'-0"

