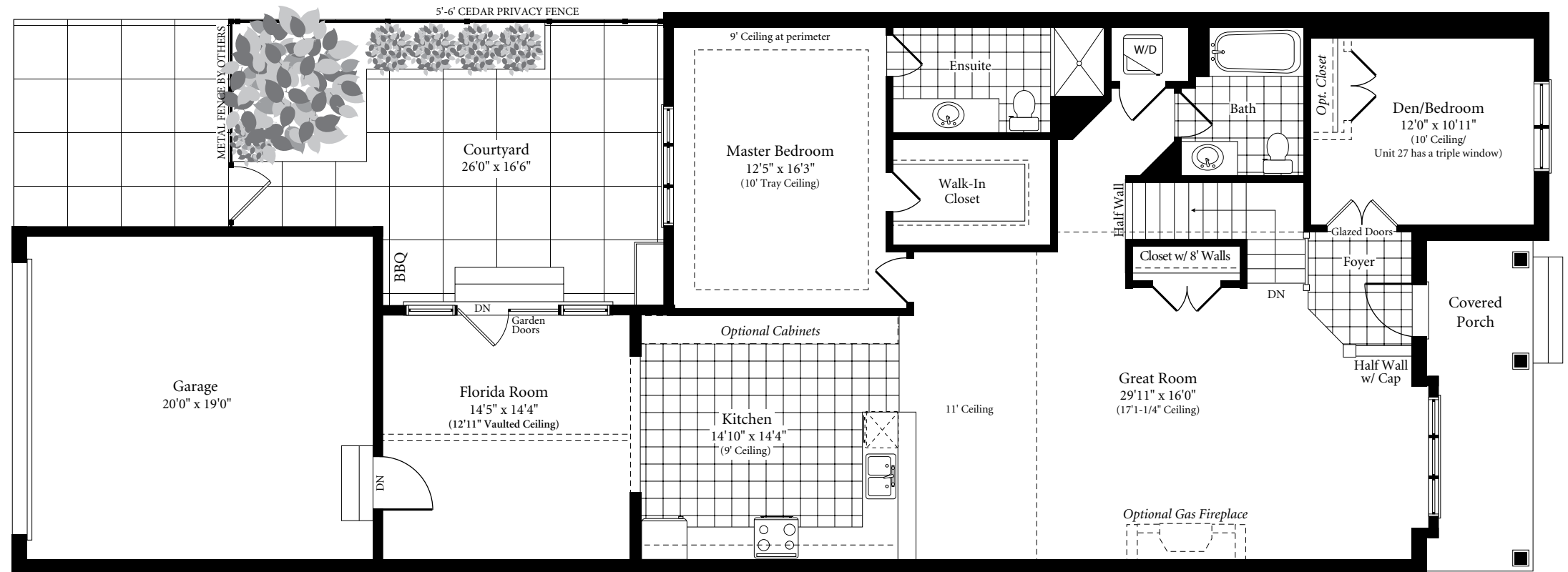


# BURGUNDY/BORDEAUX

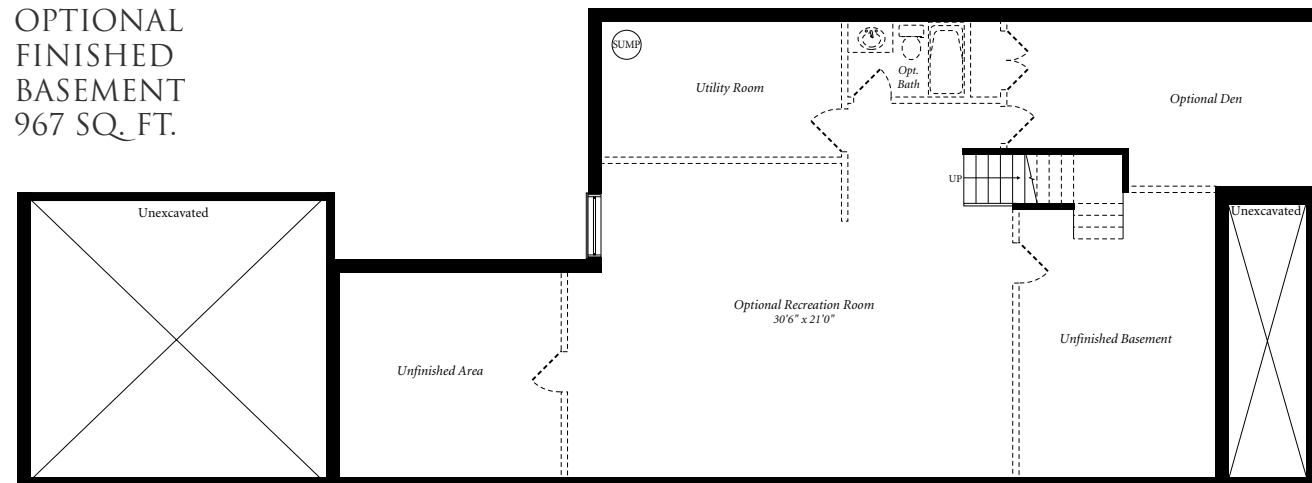
INTERIOR UNIT - NEW URBAN TOWN A(ii) - 1538 SQ.FT.

UNIT 26 & UNIT 27 (FLIPPED)

MAIN FLOOR  
1538 SQ. FT.



OPTIONAL  
FINISHED  
BASEMENT  
967 SQ. FT.



All dimensions are approximate and generally comprise the greater width by the greater length. Actual usable floor area may vary from that stated, which includes open areas and areas finished below grade where applicable. Actual square footage for each Townhome may vary from Townhome block to Townhome block. Buyers are advised to examine specific plans for their Town block. Elevation renderings are Artists' concepts and may vary according to floor plan configurations. Furniture, BBQ and landscaping in garden area are not included and are shown for marketing purposes only. See Sales Representative for details. E & OE. May 2019



The Vintages at  
**FOUR MILE CREEK**  
bh Blythwood Homes