

# 65 PLEASANT AVENUE • PORT MODEL B



Artist's Concept. Illustration shown with Optional Stone.

## PORT MODEL B

*1636 square feet • Optional Finished Basement Upgrade  
65 Pleasant Avenue • Lot B Size: 53'4" x 113'*

Ken Burden & Carolyn Thomson, Sales Associates

[www.blythwoodhomes.ca](http://www.blythwoodhomes.ca) • 1-866-422-6610 • [kenandcarolyn@blythwoodhomes.ca](mailto:kenandcarolyn@blythwoodhomes.ca)

All dimensions are approximate and generally comprise the greater width by the greater length. Actual usable floor area may vary from that stated, which includes open areas and areas finished below grade where applicable. Elevation renderings are Artists' concepts and may vary according to floor plan configurations. Prices subject to change without notice. See Sales Representative for details. E & OE.

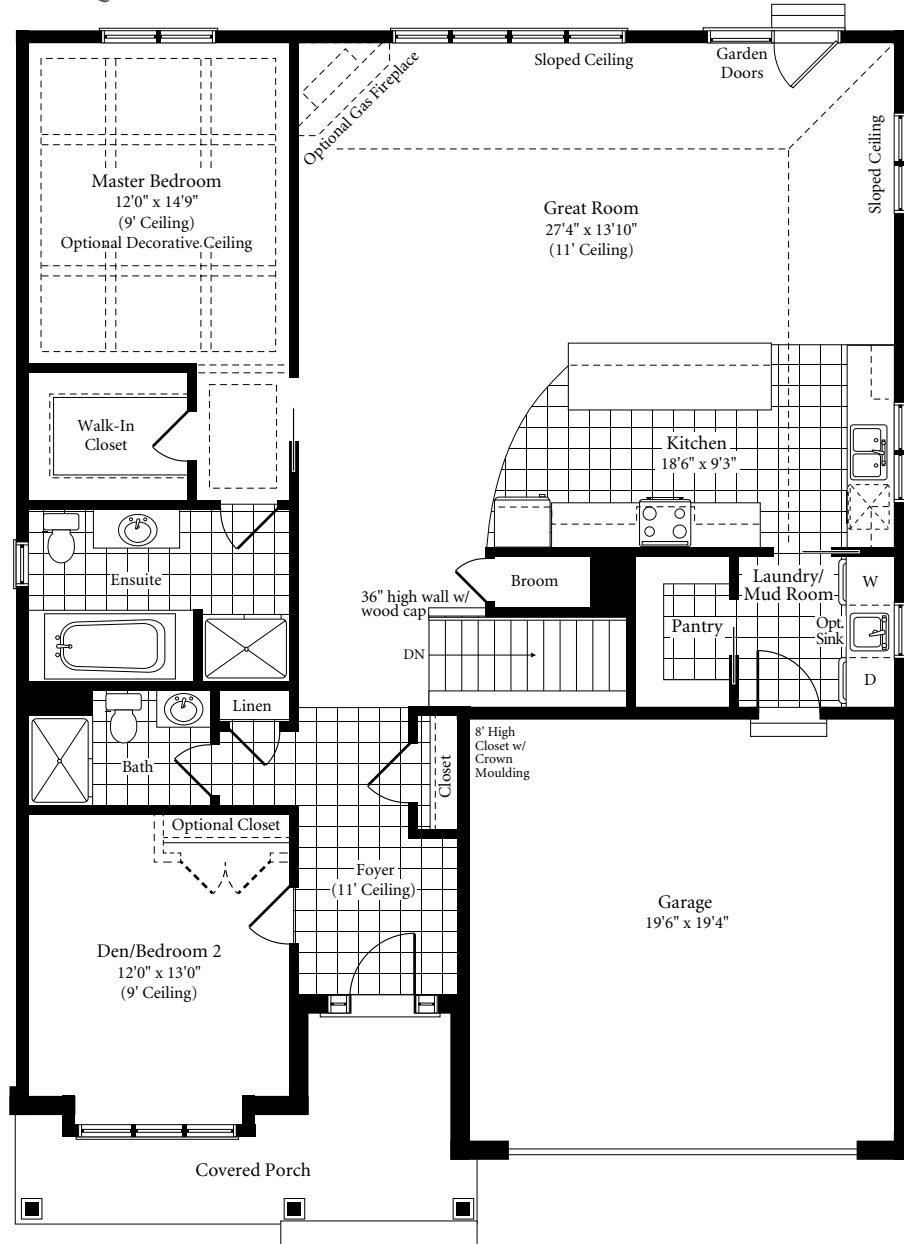


**Blythwood**  
HOMES

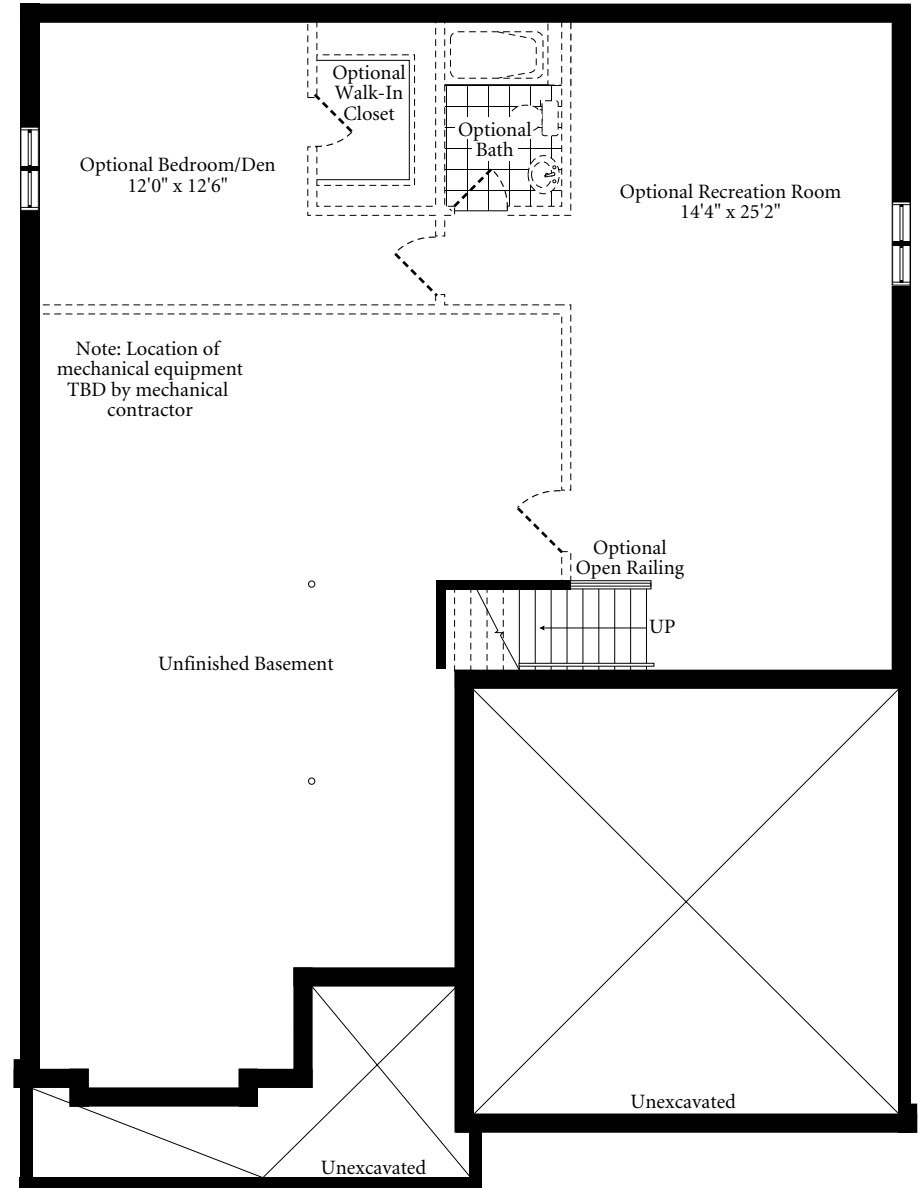
OUR PASSION IS BEAUTIFUL HOMES

*Refer to Pleasant Avenue Lots Features and Finishes List. Illustration shown with Optional Stone.*

MAIN FLOOR  
1636 SQ. FT.



OPTIONAL  
BASEMENT FLOOR  
704 SQ. FT.



All dimensions are approximate and generally comprise the greater width by the greater length. Actual usable floor area may vary from that stated, which includes open areas and areas finished below grade where applicable. Elevation renderings are Artists' concepts and may vary according to floor plan configurations. Prices subject to change without notice. See Sales Representative for details. E & OE.