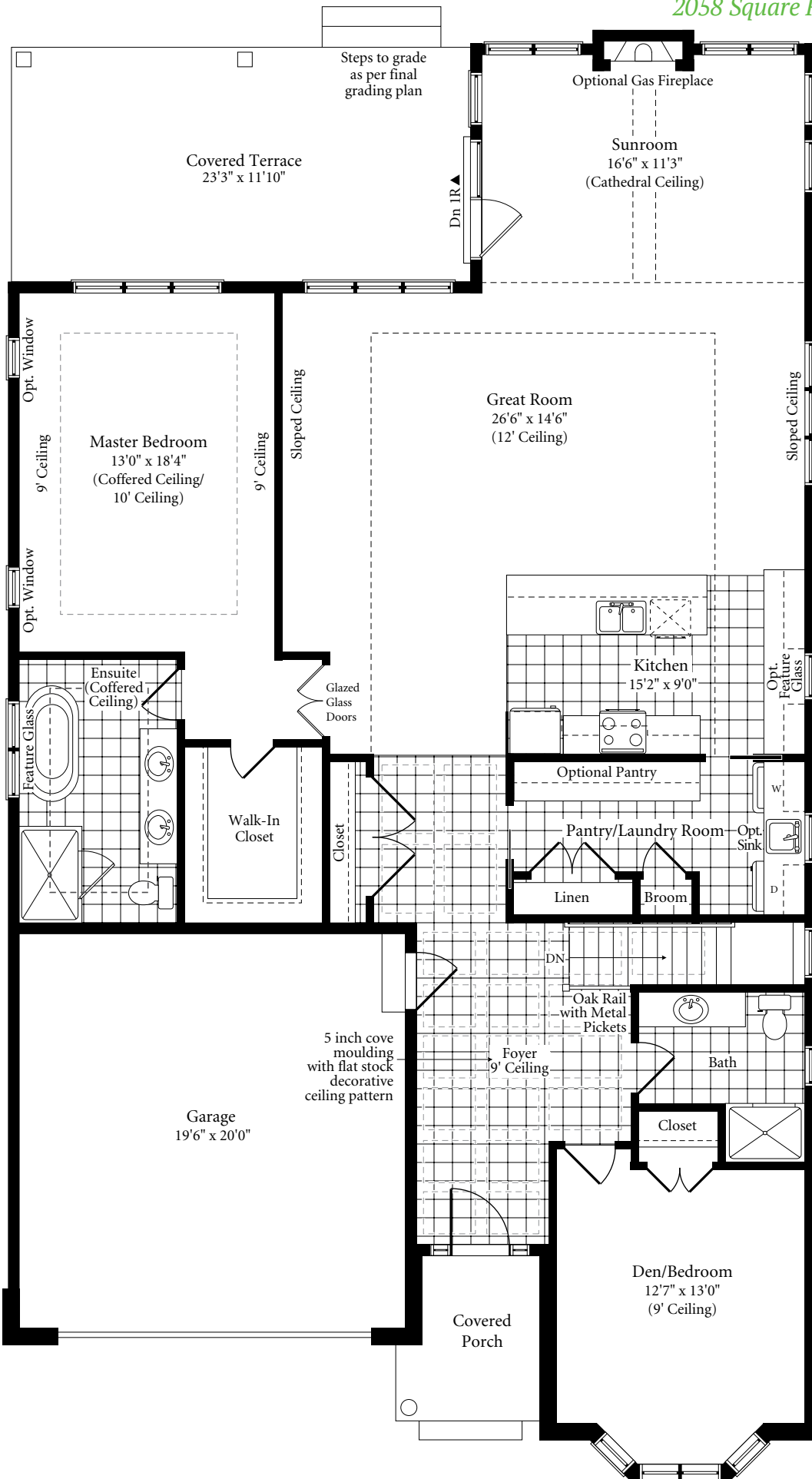


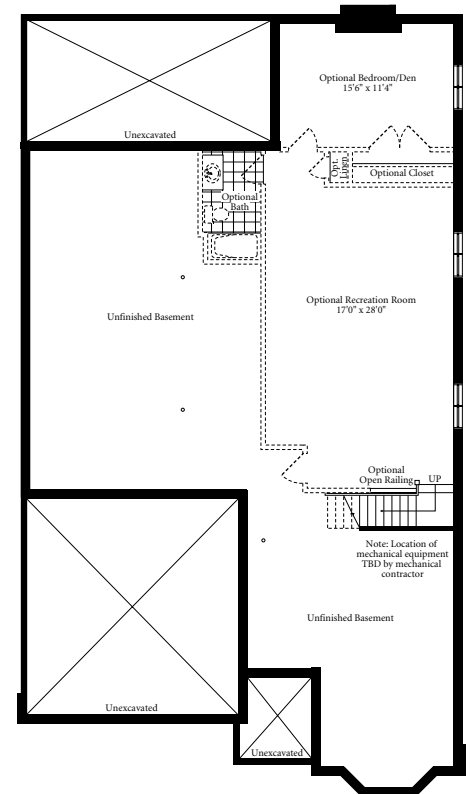
# WESTWIND B

2058 Square Feet • Optional 860 sq. ft. Basement



MAIN FLOOR  
2058 SQ. FT.

OPTIONAL  
FINISHED  
BASEMENT  
860 SQ. FT.



All dimensions are approximate and generally comprise the greater width by the greater length. Actual usable floor area may vary from that stated, which includes open areas and areas finished below grade where applicable. Elevation renderings are Artists' concepts and may vary according to floor plan configurations. See Sales Representative for details. E & OE.